

Die Rolle der DWB in der Daten- und Sammlungsinfrastruktur des LIB

Birgit Rach
LIB Museum Koenig, Bonn

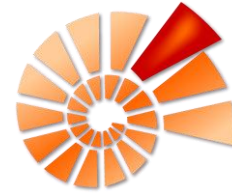
Das LIB - Leibniz-Institut zur Analyse des Biodiversitätswandels

- Forschungsmuseum der Leibniz-Gesellschaft
- An zwei Standorten: Museum Koenig, Bonn und Museum der Natur, Hamburg
- Diverse Abteilungen:
 - Verschiedene Zoologische Sammlungen
 - Geologische Sammlung
 - Paläontologische Sammlung
 - Biobank (Gewebe, DNA, Zellen in Kryolagerung)
 - Umweltprobenbank (im Aufbau, u.a. Insektenmischproben)
 - Biohistoricum
- Aktuelle Forschungsprojekte
- GFBio Datencenter



Komponenten der Daten- und Sammlungsinfrastruktur am LIB

- **DWB** – Framework für Sammlungsdaten und Metadaten



- **fylr** – Asset Management System für Bilder und Filme (<https://media.leibniz-lib.de>)



- **Geneious** – Software zur Analyse von Sequenzdaten



- **ASV-Registry** – Plattform zum Managen von ASV- und OTU-Tabellen

(<https://data.bolgermany.de/gbol1/dashboard/overview>)

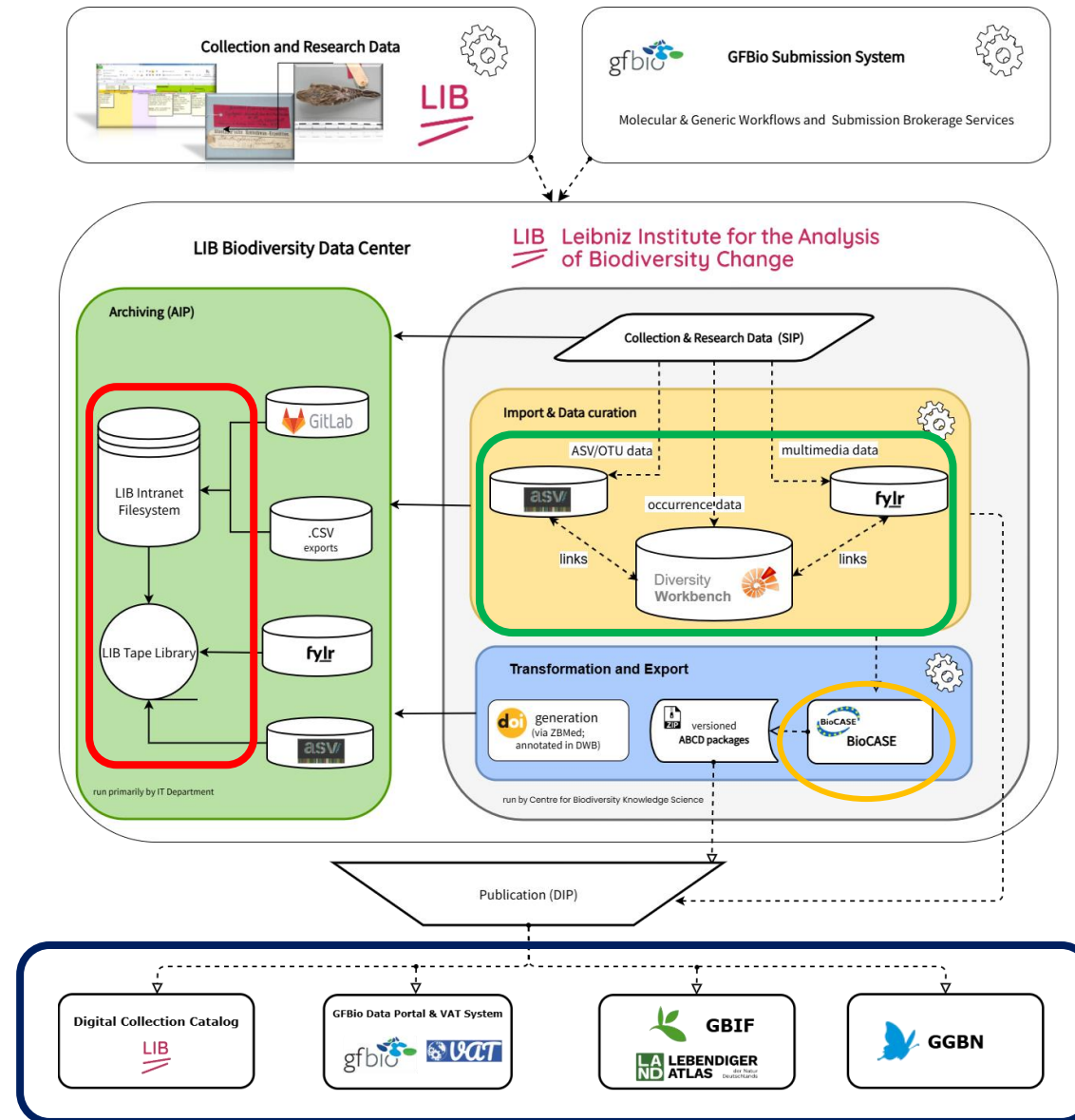


- **BioCASE Provider Software** - Publishing Software (z.B. zu GBIF, GFBio /NFDI, GGBN)



- **Digitaler Sammlungskatalog** (<https://collections.leibniz-lib.de>)

Komponenten der Daten- und Sammlungsinfrastruktur am LIB



Sammlungsdatenverwaltung



The image displays several overlapping screenshots of a specimen management software interface. The top-left screenshot shows a specimen record for *Crociodura longipes* Hutterer and Happold, 1983, with accession number MAM2021-0661. It includes details such as the collection date (2020/1/14), location (Gbama Community Forest, Sierra Leone), and various morphological measurements. The top-right screenshot shows a record for *Enoplognatha* with accession number BPT_forest 1, including collection specimen details and a list of associated DNA samples. The middle-left screenshot shows a list of DNA samples for *Enoplognatha* and *Entomobrya nivalis*. The middle-right screenshot shows a specimen image of *Goniobranchus geometricus* (Risbec, 1928) with a detailed taxonomic classification including Phylum: Mollusca, Order: Nudibranchia, and Family: Chromodorididae. The bottom-left screenshot shows a list of DNA samples for *Goniobranchus geometricus*. The bottom-right screenshot shows a detailed view of a DNA sample for *Goniobranchus geometricus* with accession number Chge15Bu-2 and collection specimen details.

Datenverschneidung mit Laborsoftware



Import der Labordaten
aus Geneious als Analyse
(z.B. beim GBOL-Projekt)

Acc. Nr. ZFMK-TIS-11551

Specimen images and resources

Carabus nitens L., 1758

Specimen 11551 Event 55952 Version 22 5 Withhold.

Barcode_Analyse 161 (2015-03-02 10:54:50) 27120. 3 meth. (Barcode, ...)

Nr. of an.: 27120 Date: 2015-03-02 10:54:50

URI:

Part:

Respons.: GBOL-ZFMKLab

Result:

```
AACCTTATATTTTATTTTGGTGCCTGATCAGGAATAGTAGGAAC TTCATTAGAATACTAATTCGAGCGGAATTAGGTAATCC TGGATCCTTAATGGAG ATGATCAAATTTATAATGTTATGTAACAGCCATGCTTTTGTAAATAATTTTTTATAGTTATGCCTATTATAATGGAGGATTTGGAAATGGATTAGTT CCTTTAATATTAGGAGCTCCGTGATAGCATTCCCTCGAATGAATAACATGAGATTTTACGACTATTACCCCATCCTTAACCCCTCTCTTAATAGCAGTATA GTCGAAAAAGGGGCTGGGACAGGATGAACCTGTCACCGCTCCGCTGCTTCGGGAATTGTCACAGAGGAGCATCAGTAGACCTAGCAATTTTCAGATTAC ATTTAGCAGGGATCCTCAATTCAGGAGCAGTAAATTTTATACGACAATTTAATATACGACATGAGGAATAACCTTTGATGCAATACCATTTATTC GTATGATCTGTAGGATTCAGCATTATTACTTTTACTTCTTTACCTGATTTAGCCGGAGCTATTACTATGCTTTTAAACAGATCGAAATTTAAATACCTTCT TTTTTCGATCCGACGAGGAGGTGATCCTTACTTTTATCAACATTTATTT
```

Notes: LZFIinsert

Methods

Barcode 9	project
Sequencing 2	region
Sequencing 3	sequence
	sequence_length
	trace_count

Parameter value

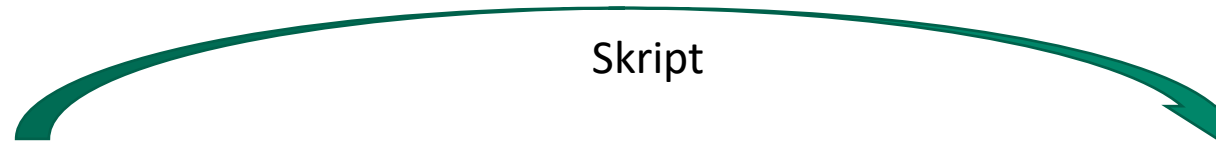
GBOL

Mark: 9

Zusammenarbeit verschiedener Sektionen



Kopieren und Verknüpfung zwischen verschiedenen Sammlungen
(morphologische Sammlung ↔ Biobank)



Sektion Mammalia

Sektion Biobank

Schnittstelle zu externen Datenbanken



Verlinkung zu extern gespeicherten Medien in fylr
(Voraussetzung: stabile und öffentliche URL)

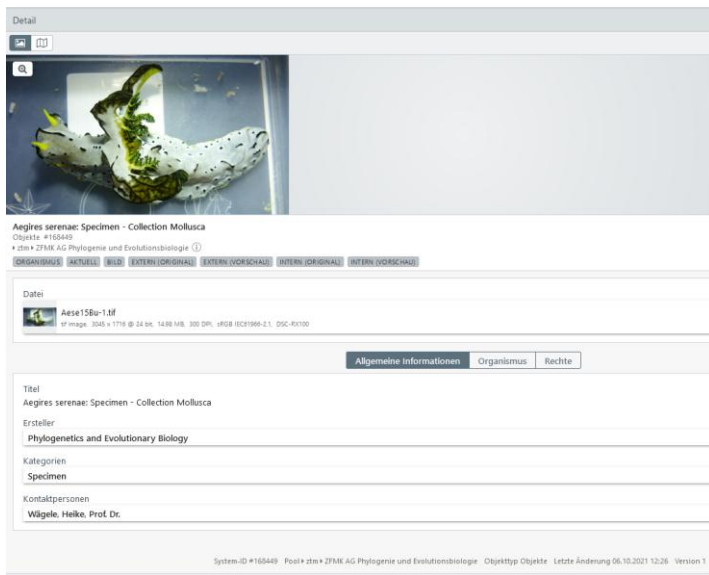
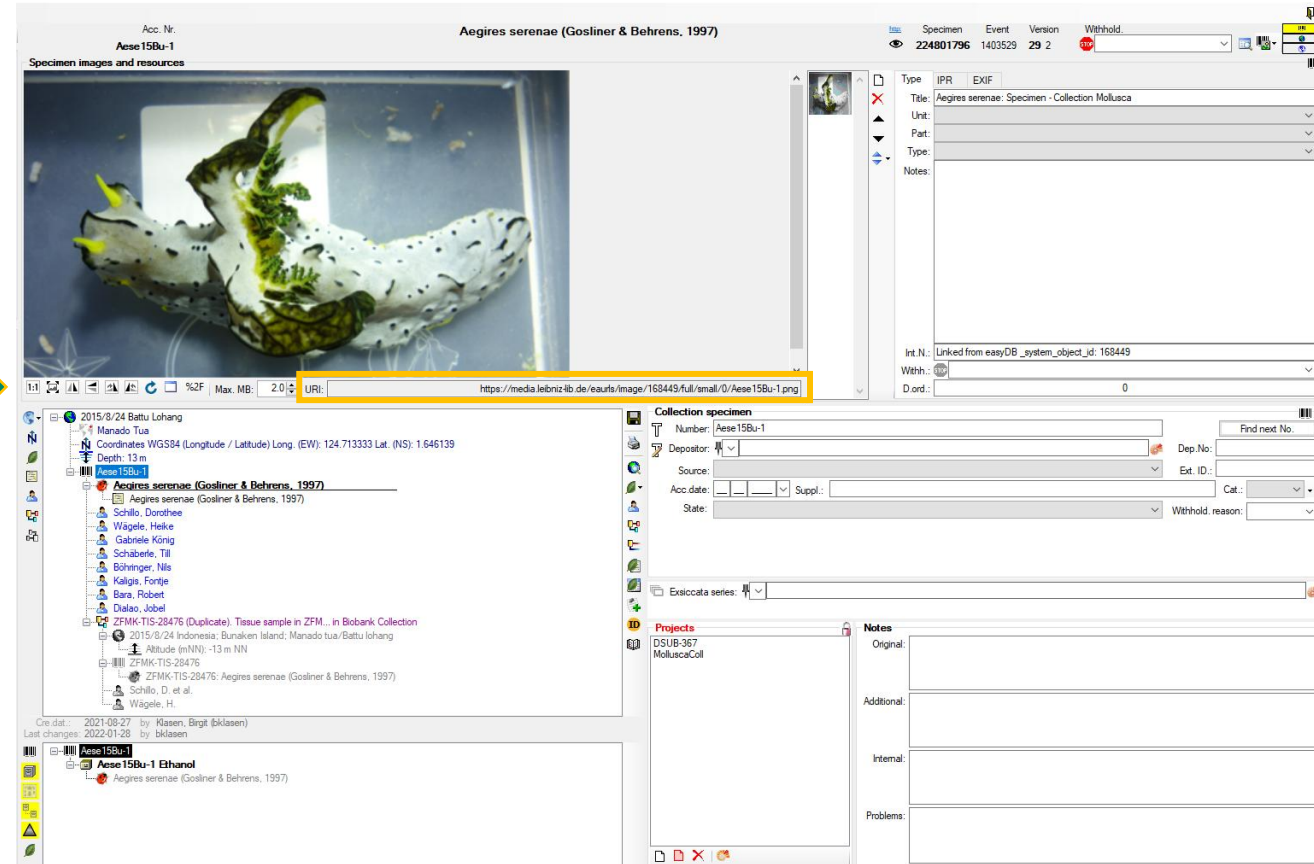


Bild in fylr



Link in DiversityCollection

Schnittstelle zu öffentlichen Repositorien



z.B. Verlinkung zu Sequenzen in ENA
(Voraussetzung: stabile und öffentliche URL)

ENA
European Nucleotide Archive

Project: PRJEB45552

We used a modified double-digest restriction-enzyme-associated DNA (quadrRAD) sequencing protocol proposed by Franchini et al. (2017) for dsRAD library preparation.

Secondary Study Accession: ERP129675

Study Title: Evaluating Species Delimitation Methods in Radiations: The Land Snail *Albinaria cretensis* complex on Crete

Center Name: German Federation for Biological Data, University of Hamburg

Broker Name: GFBIO

Dataset Pictures: <https://doi.org/10.20363/images-albinaria-crete-1.0>

ENA-FIRST-PUBLIC: 2022-03-18

ENA-LAST-UPDATE: 2022-03-31

Study Accession	Sample Accession	Experiment Accession	Run Accession	Tax Id	Scientific Name	Genera

Eintrag in ENA



Acc. Nr. ZMH146002_4635

Albinaria cretensis (Rossmässler, 1836)

Specimen images and resources

Chania: Moni Katholiko

Altitude (mNN): 80 m NN

Coordinates WGS84 (Longitude / Latitude) Long. (EW): 24.1461 Lat. (NS): 35.5903

<https://www.ebi.ac.uk/ena/browser/view/PRJEB45552> (Public database) ENA Accession for P... in Malacology

Collection specimen

Number: ZMH146002_4635

Source: ...

Acc date: ...

External relation to Public database <https://www.ebi.ac.uk/ena/browser/view/PRJEB45552> in Malacology Section ZFMK

Identifier or URL of related specimen: <https://www.ebi.ac.uk/ena/browser/view/PRJEB45552>

Description: ENA Accession for Project

Relation type: Public database + Genebank, BOLD, ...

Collection: ZFMK | Malacology Section ZFMK

Link in DiversityCollection

Metadatenverwaltung in DiversityProjects



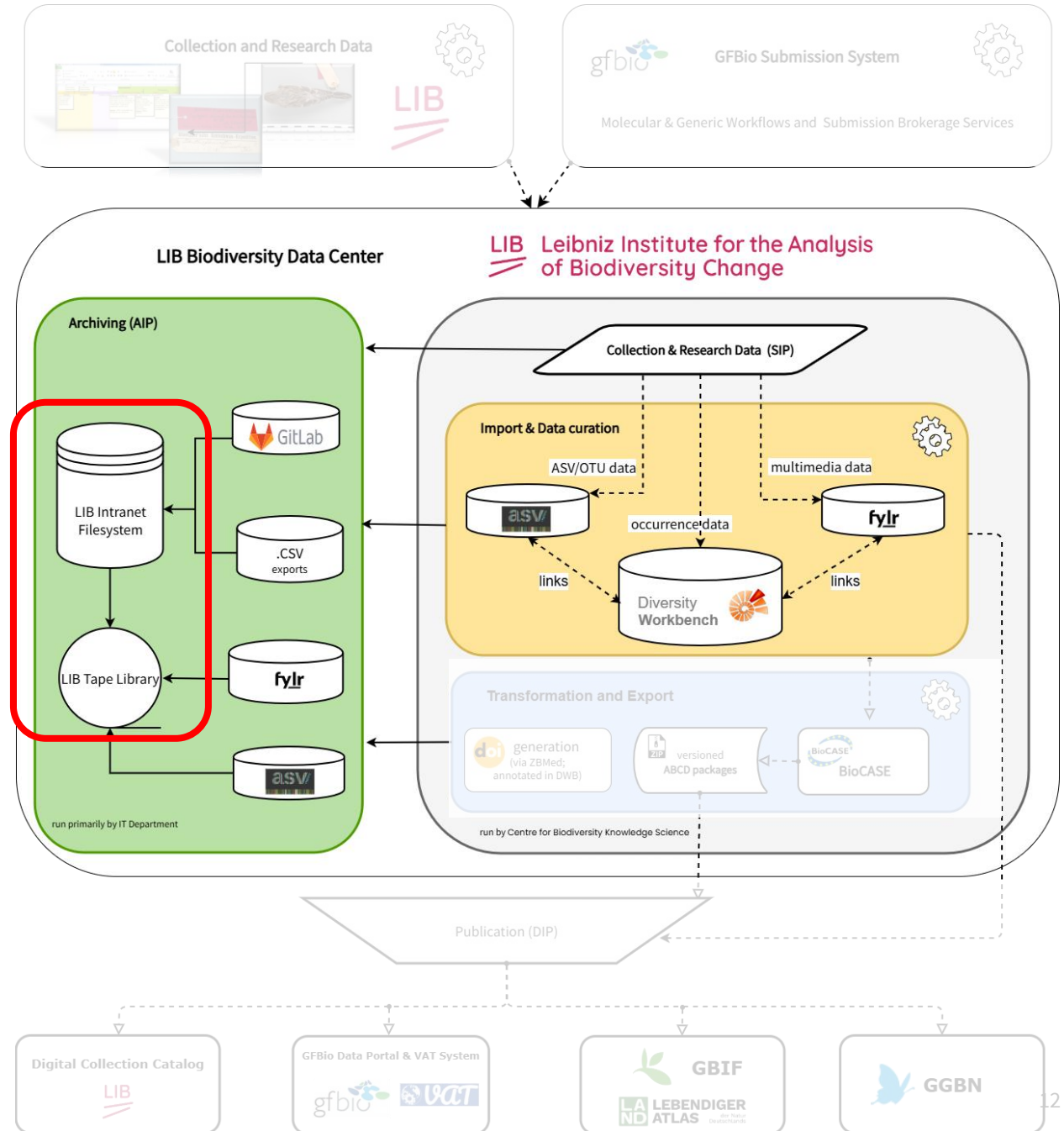
- Verwaltung projektweiter Metadaten
- Einstellungen zur Veröffentlichung

The screenshot displays the DiversityProjects web interface for project DSUB-366. The interface is divided into several sections:

- Project List (Left Sidebar):** A list of projects including DSUB-220, DSUB-222, DSUB-346, DSUB-365, DSUB-366 (selected), DSUB-367, DSUB-368, DSUB-401, DSUB-402, DSUB-44, EchinodermataCoil, EntomopteraCoil, and Fortschrittsbewertung.
- Project Details (Main Content Area):**
 - Title:** First Study on Marine Heterobranchia (Gastropoda, Mollusca) in Bangka Archipelago, North Sulawesi, Indonesia
 - Description:** As ephemeral, benthic, secondary consumers usually associated with sessile coral reef organisms, marine heterobranchia are good indicators of the health of marine tropical habitats. Thus, marine heterobranchia have recently become a major target for monitoring programs. For this work, an extensive survey was made in Bangka Archipelago, the first of its kind in this area. Bangka Archipelago is composed of small islands and the adjacent coastline of North Sulawesi. The substrate is dominated by biogenic reefs and volcanic rocks, thus forming highly diverse habitats. In total, 145 species were collected and/or photo-documented in September 2017 and September 2018, which represents the dry season. They can be assigned to the Cephalopoda, Aplousida, Pleurobranchida, Nudibranchia, and Eupulmonata. Thirty-three species are new to science, highlighting the lack of knowledge about the group and especially about this region. Our data provide a baseline for future monitoring surveys, as the anthropogenic pressures on Bangka Archipelago are increasing due to enhanced tourism activities, but also due to large scale environmental changes caused by previous mining operation activities.
 - URI:** <https://media.zhmk.de/detail/168721>
 - Version:** 1
 - Embargo:** 2021-10-31 00:00:00
 - Type:** Collection - Project for the module DiversityCollection
- Technical Details (Bottom Section):**
 - Default:** BIOCAS/DSA GFBo-v2 [GFBo], InstitutionID: ZFMK/UNSRAT, SourceID: Phyle-Mollusca
 - ContentContact:** ContentContactName: Adelfia Papu, ContentContactEmail: adelfia.papu@unsrat.ac.id, ContentContactPhone: ContentContactAddress: Faculty of mathematics and Sciences, Sam Ratulangi University, Manado, Indonesia
 - TechnicalContact:** [GFBo], TechnicalContactName: LIB Biodiversity Datacenter [GFBo], TechnicalContactEmail: datacenter@leibniz-lib.de [GFBo], TechnicalContactPhone: 0049 (0) 2289122342 [GFBo], TechnicalContactAddress: Leibniz-Institute for the Analysis of Biodiversity Change - Adenauerallee 127, 53113 Bonn, Germany [GFBo]
 - Owner:** ZFMK & UNSRAT, OwnerEmail: h.roegele@leibniz-zhmk.de & adelfia.papu@unsrat.ac.id, OwnerOrganisation: Zoological Research Museum Koenig - Leibniz Institute for Animal Biodiversity & Sam Ratulangi University, OwnerOrganisation-Abbreviation: ZFMK & UNSRAT, OwnerOrganisationLink: Phylogenes: & Faculty of Mathematics and Sciences, OwnerAddress: Adenauerallee 160, 53113 Bonn, Germany & Bahu, Manado 95115, Indonesia, OwnerURL: <https://www.zhmk.de> & <https://www.unsrat.ac.id>, OwnerLogoURL:

Archivierung

Backups als .csv-Dateien im LIB Intranet Dateisystem und auf Bändern

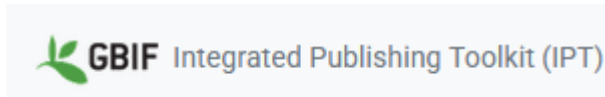


Publikation

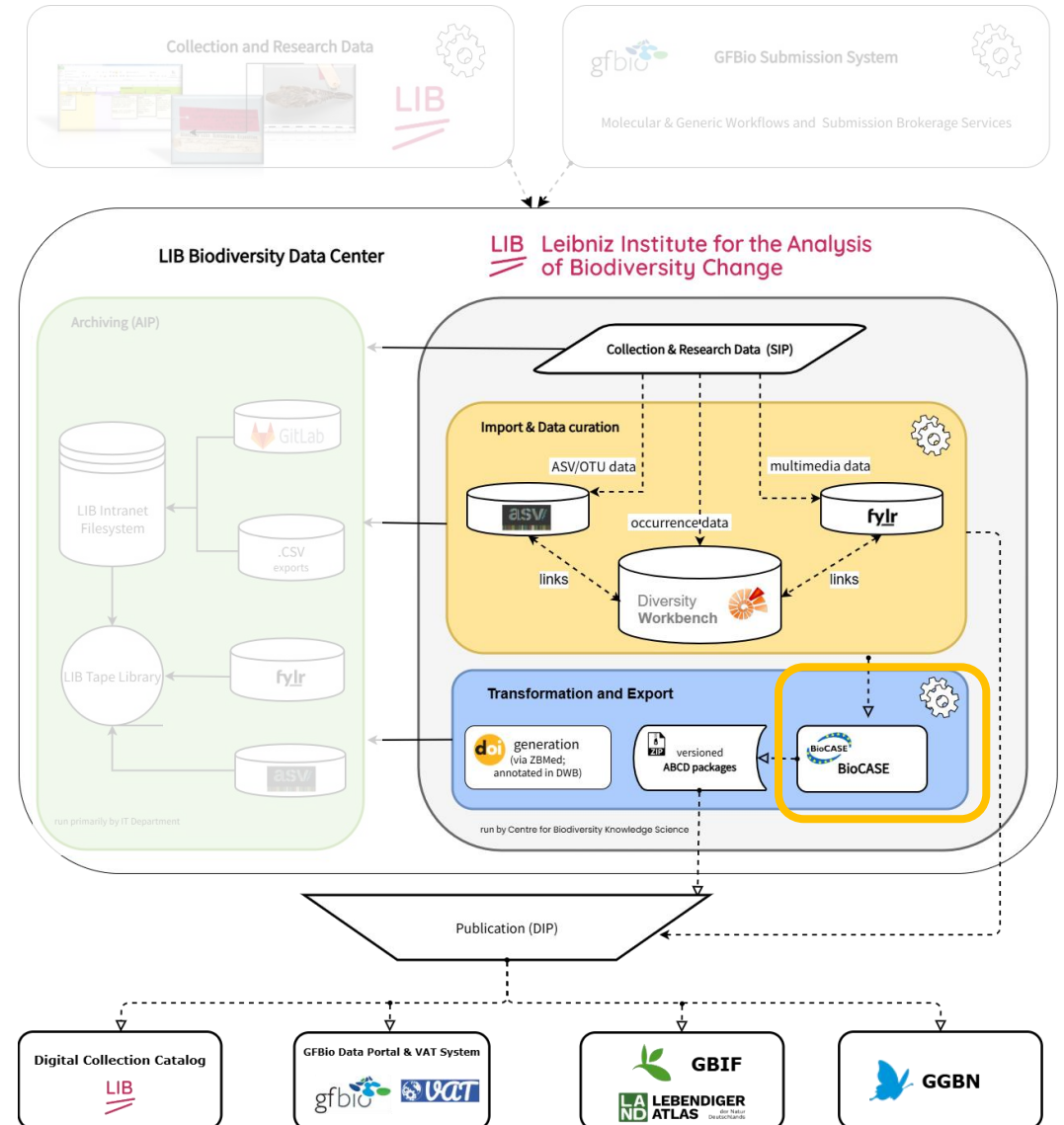
- Mapping zu ABCD in BioCASE Provider Software



- Views zum Mapping im GBIF IPT



„Eine versteckte Sammlung ist eine tote Sammlung“

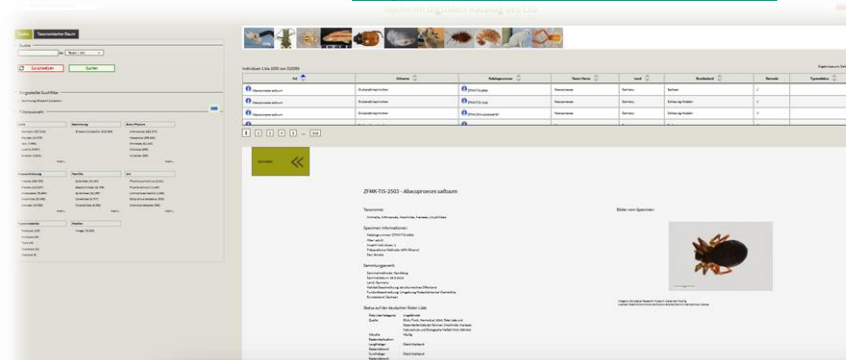


Recherche

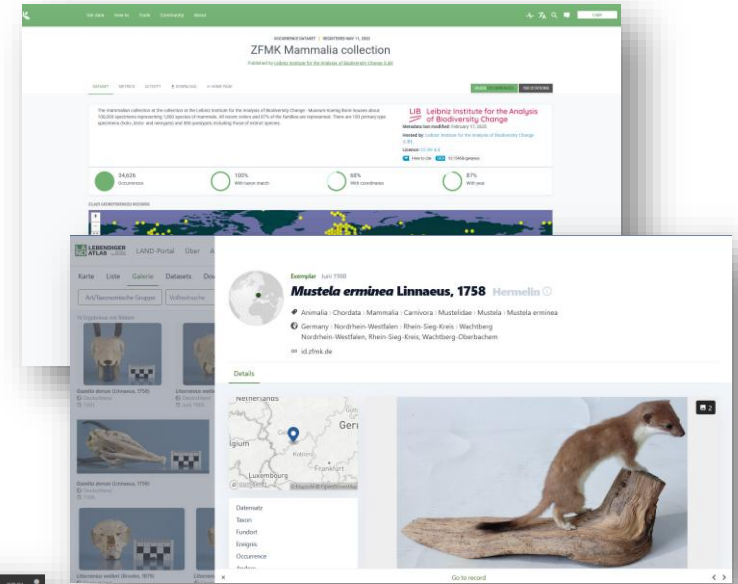
„Eine versteckte Sammlung ist eine tote Sammlung“

- Daten werden sichtbar und nutzbar:
 - Digitaler Sammlungskatalog des LIB
 - ASV-Registry
 - GBIF/LAND-Portal
 - GGBN
 - GFBio-Portal/VAT
 - GBOL-Portal

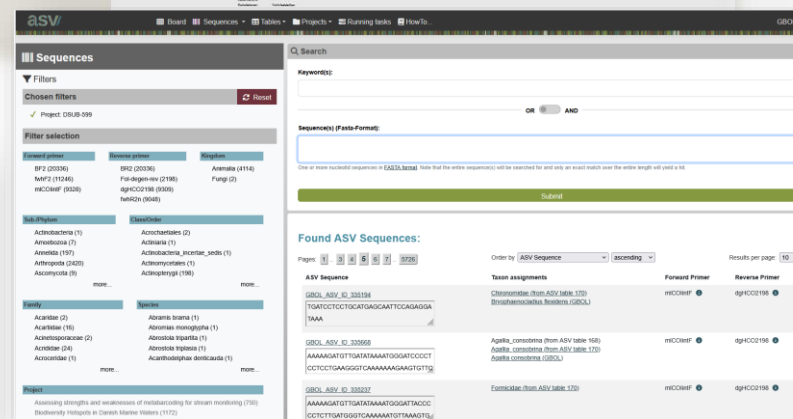
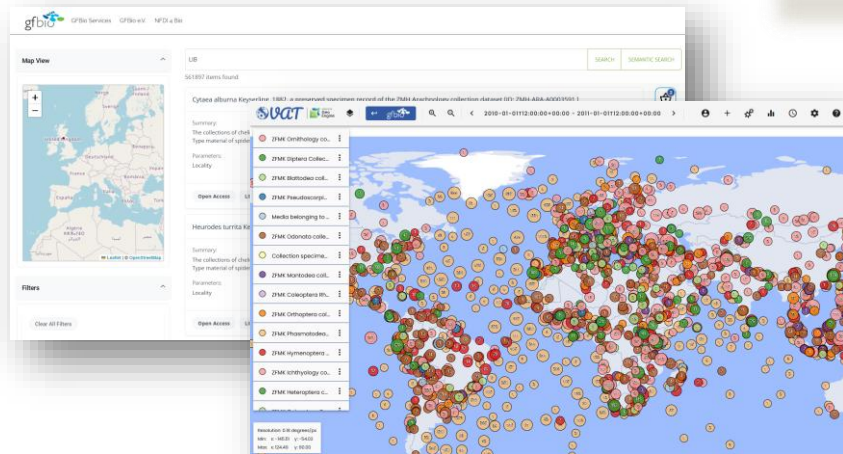
<https://collections.leibniz-lib.de/>



https://www.gbif.org/dataset/search?publishing_org=6e1cad80-bdf5-11d8-84ea-b8a03c50a862



<https://search.gfbio.org/>



<https://data.bolgermany.de/gbol1/dashboard/overview>

<https://land.gbif.de/occurrence/search/?institutionKey=07d2dd65-80b8-4402-bf51-b55809c85f87>



https://www.ggbn.org/ggbn_portal/search?institution=LIB,%20Bonn%20and%20Hamburg

Vielen Dank für Ihre Aufmerksamkeit

Kontakt:

Name: Birgit Rach

E-Mail: b.rach@leibniz-lib.de